



**Great South Land**  
Minerals Limited

Great South Land Minerals Limited ABN 54 068 650 386

**BRIDGING**  
**EMERGENCY RESPONSE PLAN**  
**(DRILLING)**

**BELLEVUE 1**

**EL 14/2009**

**TASMANIA**

**2011**

## **Table of Contents**

1. Glossary and Definitions
2. Document handling
  - 2.1 Document Distribution
  - 2.2 Document Control
  - 2.3 Document Approval
3. Site Specific Information
  - 3.1 Well and Emergency Response Details
4. Bridging Document Overview
  - 4.1 Project Overview
  - 4.2 Responsibilities
  - 4.3 Objectives
  - 4.4 Scope
  - 4.5 Method
5. HSE Rolls and Responsibilities
  - 5.1 Site Person in Charge (PIC)
  - 5.2 Compatibility of HSE Polices
  - 5.3 HSE Procedures
  - 5.4 Well Control
  - 5.5 Safety Procedures / Emergency Response
  - 5.6 Hazardous Substances
  - 5.7 Safety Systems
6. Operations

## **APPENDICES**

Appendix 1: Emergency Response Interface

Appendix 2: Contacts

Appendix 3: **Hunt Energy** Emergency Response Manual

Appendix 4: **Hunt Energy** Environmental Incident procedure

## 1 GLOSSARY AND DEFINITIONS

DA	Designated Authorities. The Government Agencies responsible for the administration of the relevant Acts in Tasmania
Drilling Contractor	The owner and operator of the Drilling rig. <b>Drilling Rig: Hunt Energy Pty Ltd.</b>
Drilling Plan	GSLM's written directions for the drilling of the well.
GSLM	Great South Land Minerals Limited (License holder and operator)
ERP	Emergency Response Plan The well specific plan to assist Operator's supervisory personnel in their response to an emergency situation that may arise from, or affect, drilling/completion operations. This plan is to be used in conjunction with the Drilling Contractor's HS&E Manual.
ERT	Emergency Response Team The Operator and Drilling Contractor management personnel assigned to develop an emergency response strategy and to carry out response actions in accordance with the Emergency Response Plan and Drilling Contractor's HS&E Manual.
JSA	Job Safety Analysis
License	Government license issued under Mineral Resources Development act giving the holder the right to explore for and develop oil and gas in Tasmania.
Location	The site at which the well is to be drilled.
Operator	Great South Land Minerals Limited the company which holds the license to explore for hydrocarbon accumulations in the Lease area. Or, in a lease area in which one or more companies hold or are earning an interest; the company designated as responsible for the operations.
PIC	Person in Charge; GSLM's Drilling and Completion Supervisor, the person on the wellsite with ultimate responsibility for - <ul style="list-style-type: none"><li>▪ The safety, health and welfare of those working at the wellsite.</li><li>▪ The conduct of the well drilling &amp; completion operations.</li><li>▪ Safeguarding the well and the environment.</li></ul>
MRT	Mineral Resources of Tasmania. The primary regulatory authority for this well.
RFDS	Royal Flying Doctor Service
SAR	Search and Rescue.

Site                                      The Drilling, Well and areas around the rig where drilling equipment is sited or drilling/completion related operations are carried out.

Also referred to as the lease or wellsite.

## **2.0 DOCUMENT HANDLING**

### **2.1 Document Distribution**

1.        GSLM - Drilling Manager
2.        GSLM – Drilling Supervisor
3.        GSLM – Management Team

### **HUNT ENERGY**

4.        Contractor Field Manager
5.        Area Manager

### **REGULATORY AUTHORITY**

6.        Mineral Resources Tasmania

### **2.2 Document Control**

This Bridging ERP is a “controlled document”. Should the recipient (user) become aware of any changes or corrections that are required please contact:

**Mr. Ted McNally:** Drilling Manager..... **03 6231 3529**

### **2.3 Document Approval**

This Bridging ERP has been reviewed by GSLM and Hunt Energy and it is agreed:

- The drilling of Bellevue 1 presents no high or unacceptable risks either to the safety of personnel associated with project or the environment.
- No new, unique or increased hazards were identified for the campaign;
- The HSE policies and management systems have been jointly reviewed and no fundamental conflicts were found to exist.

This Bridging ERP is approved for the GSLM Bellevue 1 well to be drilled **in 2011**.

**GSLM:** .....

Drilling Manager

.....

...../...../.....

**Date:**

**HUNT ENERGY:** .....

.....

...../...../.....

**Date:**

### 3. SITE SPECIFIC INFORMATION

#### 3.1 Well and Emergency Response Details

##### WELL DETAILS

Operator:	<b>GSLM Limited</b>
Permit Area:	<b>EL 14/2009</b>
Name of Designated Authority:	<b>MRT</b>
Initial Authority for Oil Spills:	<b>MRT</b>
Applicable Oil Spill Plan:	<b>Hunt Energy Oil Spill Contingency Plan</b>
Bellevue 1 Details:	<b>Northing: 5,338,904, Easting: 465,660 (AGO66 Zone55)</b> <b>Serpentine Road, Serpentine &amp; Roscarbro Property (Property Identification Number 7333254)</b>
Depth and Drilling Time of Well:	<b>2800m MDRT / 39 days + rig move</b>
Type of Well:	<b>Oil and Gas Exploration</b>
Estimated Spud Date:	<b>November, 2011</b>

##### EMERGENCY MANAGEMENT

Emergency Services:	Phone 000
Operations Base:	Hobart
Emergency Management:	Emergency Services / GSLM / Forestry Commission
Name of Drlg Manager:	Ted McNally (Mob 0429 044 581 - 24 hrs)
Name of Drlg Supervisor / PIC:	TBA
Forestry Tasmania:	Robin Hutchings (Ph (03) 62881501)

##### DRILLING CONTRACTOR

Drilling Contractor:	<b>Hunt Energy</b>
Name of Rig Manager:	TBA
Name of the Rig:	<b>Hunt Energy Rig #3</b>

##### LOGISTICS

Logistics Base:	Hobart
Logistics Coordinator:	Ted McNally (Mob 0429 044 581 – 24hrs)
Aviation Base:	Launceston and Hobart
Transport Contractor:	ITAC: Paul Edwards

##### MEDICAL ARRANGEMENTS

Preliminary Treatment:	Qualified First Aider / Ambulance Paramedic
------------------------	---

Nominated Hospital: General Hospital, Launceston (Ph 03 6348 7111)  
Secondary Hospital: Royal Hobart Hospital, Hobart (Ph 03 6222 8308)  
Medivac Provider: Emergency services (ambulance/helicopter). Ph 000

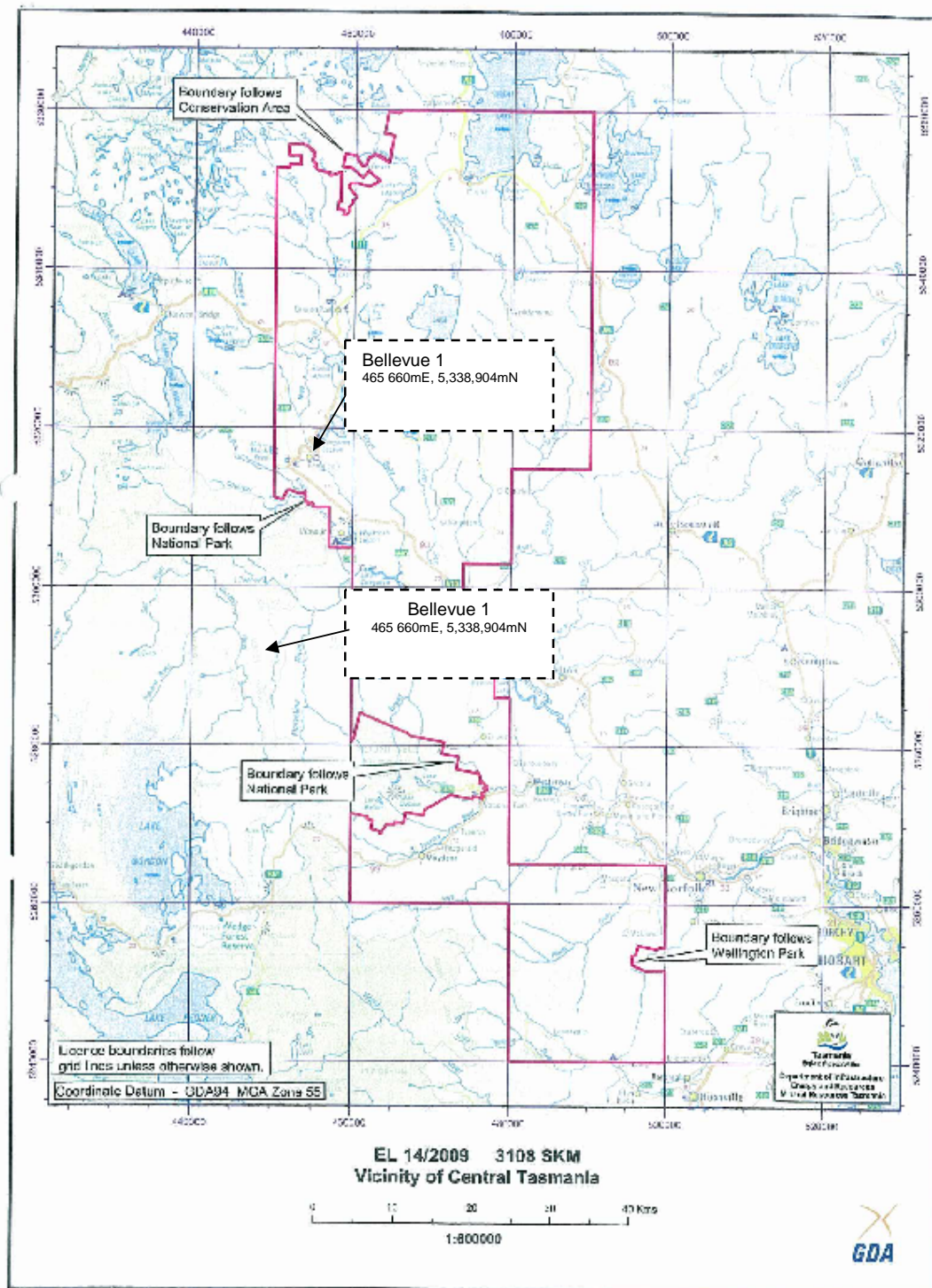
## **FIRE SERVICES**

Tasmanian Fire Service **Head Office** PH: (03) 6230 8600

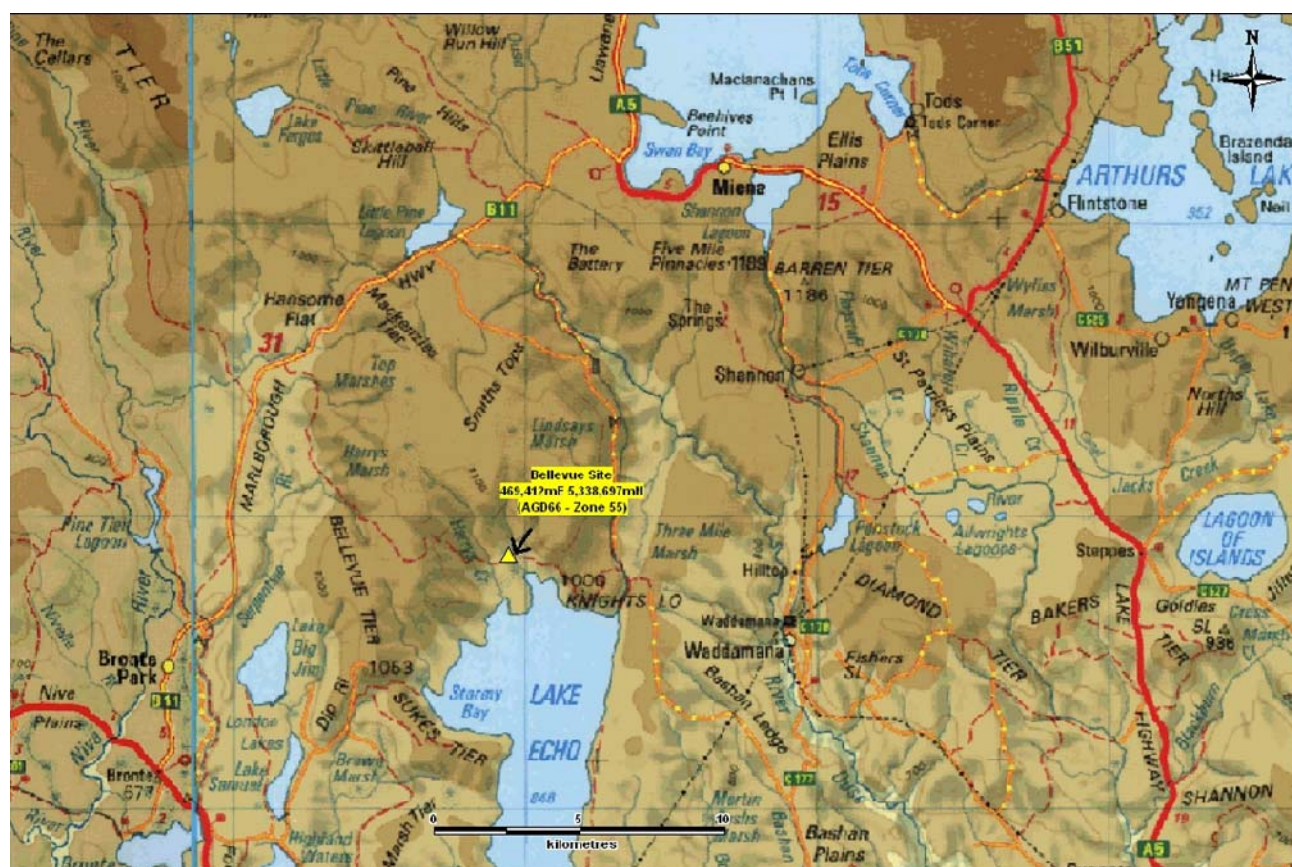
## **WELL CONTROL**

Well Control Specialist: **Alert Disaster Control (Ph 03 8361 6526)**

## LOCATION MAPS







## **4. BRIDGING DOCUMENT OVERVIEW**

### **4.1 Project Overview**

GSLM propose to drill Bellevue 1 as an oil/gas exploration well to a depth of approximately 2800m in EL 14/2009, using Hunt Energy Rig #3. 17 ½" surface hole will have been pre-drilled to approximately 350m by the Gerald Spaulding Drillers DR24 rig. Once the Hunt rig has been rigged up and inspected the 13 3/8" surface casing will be run and cemented. 12 ¼" intermediate hole will be drilled to approximately 1800m and the hole evaluated with wireline logs and DST's (if required). 9 5/8" intermediate casing will then be run and cemented. 8 ½" production hole will then be drilled to 2800m and the hole evaluated with wireline logs and drillstem tests as required. The well will then be cased and suspended or plugged and abandoned.

### **4.2 Responsibilities**

In any emergency situation on a drilling location or while moving to/from the location there are shared responsibilities between GSLM and Hunt Energy (see Fig 1 below) and these responsibilities need to be clearly defined and understood by all parties to avoid any confusion or delays during an emergency.

GSLM has overall responsibility for the drilling operation conducted on its behalf and for conformance to the requirements of Mineral Resources Development Act 1995 of Tasmania.

These responsibilities extend to ensuring good environmental management and the respect and preservation of any areas of cultural and Native Title importance. These responsibilities are in addition to the normal corporate responsibilities for employees and the public.

Hunt Energy also has similar corporate responsibilities as above, with direct responsibilities for their personnel and equipment associated with the drilling operation.

As both GSLM and Hunt Energy have similar HSE Systems and Emergency Response Plan's in place, it is necessary to clarify any areas of overlap or possible confusion between the two sets of documentation and to clearly define the rolls and responsibilities of each organisation.

Hunt Energy Emergency Response Plan forms part of this Site Specific Bridging Emergency Response Plan and will be used in conjunction with the GSLM Emergency Response Plan.

### **4.3 Objectives**

The objective of this Bridging Emergency Response Plan is to demonstrate that the HSE and Emergency Management systems covering all mobilization, wellsite and demobilization operations are clearly stated, resulting in the safe drilling of Bellevue1 in EL 14/2009.

It is the intention of GSLM and Hunt Energy, to have a clear demarcation of HSE and emergency management interfaces and to ensure there is no uncertainty as to roles, responsibilities, organizational structure, management of safety, operating procedures and reporting structure.

### **4.4 Scope**

This Bridging Emergency Response Plan encompasses all HSE, drilling and associated operations to be conducted in **2011 at the Bellevue 1 location**.

## 4.5 Method

The process for developing this Bridging Document is summarised as follows:

- HSE System Manual and Emergency Response Plan (ERP) review;
- Review of the Hunt Energy HSE Management System and ERP;
- Review of **Hunt Energy Rig #3** Facility Description and Fit For Purpose Documentation;
- Definition of **the Hunt Energy** HSE management system elements to be used and relevant system interfaces;
- Review of the Hunt Energy Hazard Register for applicability to the Campaign.

## 5 HSE ROLLS AND RESPONSIBILITIES

### 5.1 Site Person in Charge (PIC)

The Drilling Supervisor is the designated Person in Charge of the operation in an emergency situation. Hunt Energy Rig Manager will continue to direct rig and camp personnel with respect to normal operations.

Should the Drilling Supervisor be incapacitated, injured or unable to adequately perform the required duties, Hunt Energy Rig Manager shall assume the responsibilities of the PIC until GSLM has positioned a replacement supervisor on site.

The Drilling Supervisor should not operate any of the drilling contractor's plant or equipment and where practical should relay all his instructions, in writing, via the drilling contractor's site manager.

### 5.2 Compatibility of HSE Policies

Both GSLM and **Hunt Energy** have compatible HSE Policies in place.

Crew / personnel inductions, toolbox meetings and PTW System procedures can be conducted by both GSLM and Hunt Energy personnel without confusion of content or responsibility. The **Hunt Energy rig manager** will normally be responsible for giving inductions etc to Century personnel and the GSLM drilling supervisor all 3<sup>rd</sup> party contractors.

### 5.3 HSE Procedures

Hunt Energy HSE Procedures will be deferred to in respect to all HSE activities including Permit to Work (PTW), Job Safety Analysis (JSA), Hazard Identification, Risk Assessment and Accident / Incident Reporting.

The **Hunt Energy** HSE Procedures will be the minimum standard to be used by ALL personnel on the Bellevue location. This includes all **Hunt personnel**, all third party contractors, all GSLM personnel and all visitors to the rig.

**Hunt Energy Drug** and Alcohol policies will also apply, as a minimum standard, to ALL personnel on location, including GSLM and third party contractors.

### 5.4 Well Control

The **Hunt Energy** Well Control Procedure will initially be implemented by the **Hunt Energy Rig Manager / Driller** with subsequent input / calculation and direction from the GSLM drilling

supervisor and **Hunt Energy rig** crews who have been trained and where appropriate accreditation in accordance with **Hunt Energy** well control procedures. This training and accreditation regime will not be varied. The GSLM drilling supervisor will be the designated Person in Charge of all well control incidents.

Alert Disaster Control will mobilise well control equipment and personnel if required.

## **5.5 Safety Procedures / Emergency Response**

**Hunt Energy** Emergency Response Procedures will be deferred to in respect to muster stations and responses required to emergencies on-site. **Hunt Energy** emergency flow charts are included within the Contractor HSE Manual – ERP of the Site Specific ERP.

The flow charts incorporated within the ERP are to be used as a guide and reminder by the GSLM Drilling Supervisor to ensure all the necessary procedures and checks are carried out to GSLM requirements. The ERP details the emergency organisation and responsibilities of the Emergency Response Team (ERT) and its support mechanisms to the **Hunt Energy Rig** Emergency Response Plan, organisation and responsibilities.

## **5.6 Hazardous Substances**

Hazardous substances transported to the **Hunt Energy Rig #3** are documented in accordance with Dangerous Goods regulations. **Hunt Energy** will ensure that all hazardous materials onsite (including 3<sup>rd</sup> party hazardous materials) and used during the campaign are controlled in accordance with the **Hunt Energy** HSE Management System.

The Drilling Manager will provide relevant information including Material Safety Data Sheets (MSDS) to **Hunt Energy** for all chemicals and hazardous materials provided by for the campaign.

All hazardous materials will be transported, handled and stored according to **Hunt Energy** procedures as a minimum standard.

### **5.6.1 Drilling Fluids and Cementing Chemicals**

Only approved 3<sup>rd</sup> Party Contractors will control the storage and handling of the cementing, drilling fluids and mudlogging chemicals. This will be done in conjunction with the **Hunt Energy safe** work practices.

### **5.6.2 Radioactive Materials**

Radioactive materials must be stored in a dedicated and appropriate container. Only approved, trained, licensed and certified 3<sup>rd</sup> Party Contractor personnel will be authorized to handle these materials. Approved contractors will control the storage and handling of these materials in conjunction with the **Hunt Energy safe** work practices. Personnel transporting or handling radioactive material must have a Tasmanian license to do so.

### **5.6.3 Explosives**

Only approved, trained, licensed and certified 3<sup>rd</sup> Party Contractor personnel will be authorized to handle these materials. Approved contractors will control the storage, separation and handling of these materials in conjunction with the **Hunt Energy** safe work practices.

## 5.7 Safety Systems

The following **Hunt Energy** safety systems will be used, as a minimum by all personnel during all stages of the operation:

- Permit to Work
- JSA
- Standard Operating Procedures
- Safety meetings (Pre Spud, pre job, pre tour and weekly)
- Emergency Drills
- Enforcement of Drug and Alcohol Policies

The following safety features will be used to ensure the well is drilled in a safe manner and that GSLM's requirements are compatible with **Hunt Energy** systems and procedures.

- All drilling operations will conform to GSLM's management policies (Environmental, Safety etc).
- All drilling operations will be carried out in accordance to the procedures outlined in the Drilling Operations Manual (DOM). The DOM provides details of standards to be applied to GSLM wells as well as standard operating procedures for all wells. The DOM is consistent with the standard operating procedures of Hunt Energy.
- A Drilling Program will be prepared that provides a description of the safety features incorporated in the well design. These include casing design, drilling fluid design, well control and other related drilling procedures. The drilling program will be given to Hunt Energy so they can confirm that the planned well does not contravene any of their policies and that the contracted rig is fit for purpose.
- Good communication will be maintained between Hunt Energy and GSLM field representatives
- Good communications will also be maintained **between Hunt Energy** and GSLM management.
- Regular meetings will be held between GSLM and **Hunt Energy** to discuss safety and operational issues.

## 6 OPERATIONS

**Operations Base:** For drilling in the permit area EL 14/2009, the designated Operations Base will be in Hobart, which will coordinate the activities associated with the drilling program. It will also be the primary point of contact for all emergency notifications from the well site and/or the drilling contractor.

**Logistics Base:** The designated Logistics Base for the Bellevue 1 well will be GSLM's office in Hobart which will initiate the supply of equipment and materials through the Drilling Manager. In emergency supplies and equipment may also be available from other sources such as the **Hunt Energy** supply basis in Adelaide.

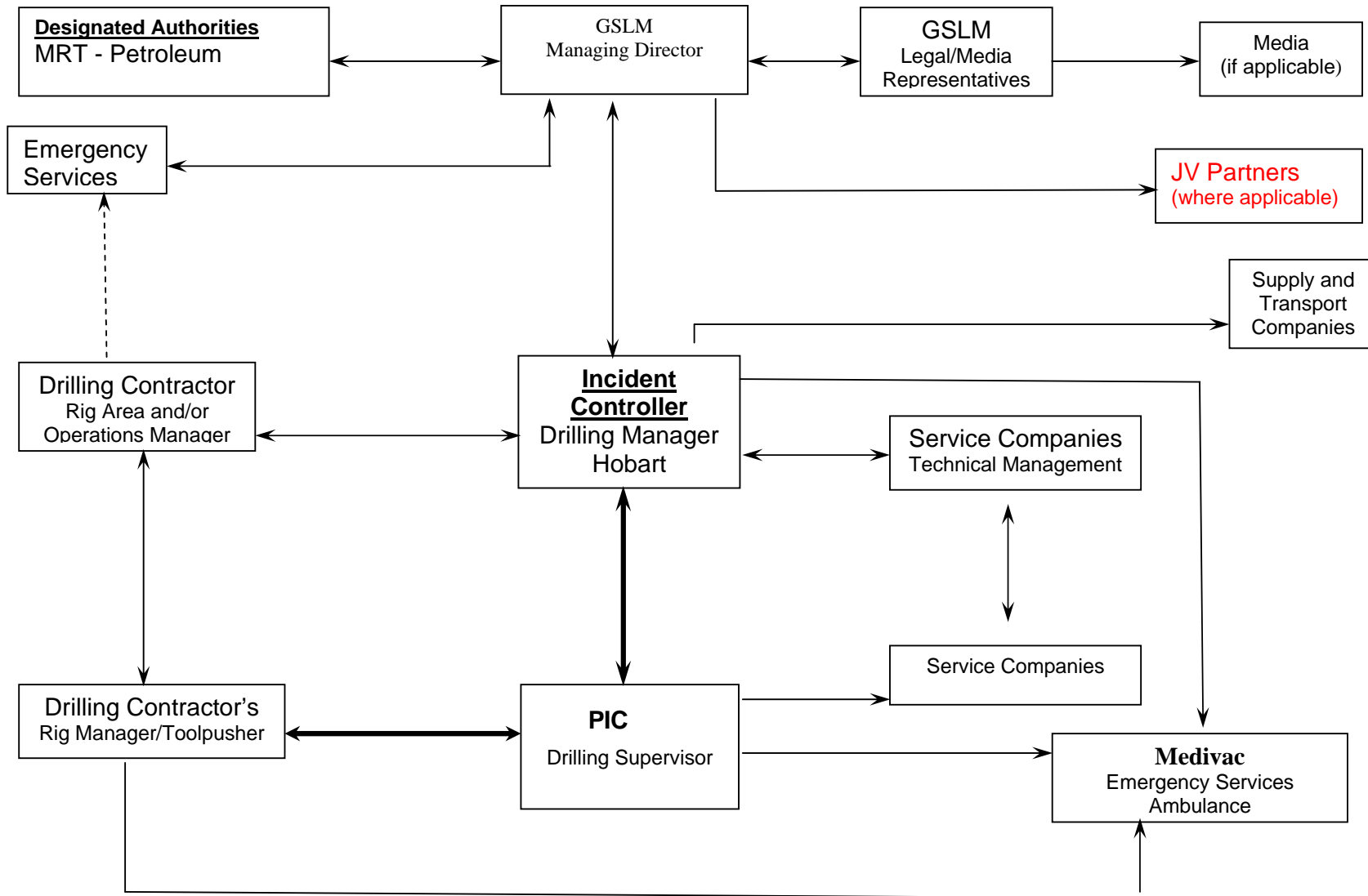
**Aviation Support Base:** Launceston and Hobart are the designated aviation support bases for the operations and will provide aircraft transfers to/from the rig via commercial aircraft.

## **APPENDICES**

## **APPENDIX 1: Emergency Response Interface**

## EMERGENCY RESPONSE INTERFACE

GSLM Ltd and **Hunt Energy Pty. Ltd.**





## **APPENDIX 2: Contacts**

	Position	Phone	Website / E-mail
<b>GSLM</b> Office Phone Office Fax  Clive Burrett  Paul Heath	  Chief Geologist Director  Executive Geologist	(03) 6231 3529 (03) 6234 9075  (03) 6231 3529  0428 205 650	<a href="http://www.gslm.com">www.gslm.com</a>  <a href="mailto:clive.burrett@gslm.com.au">clive.burrett@gslm.com.au</a>  Paul.heath@gslm.com.au
<b>Emergency</b>  <b>Fire, police, ambulance</b>  Bothwell Police Station Barrack Fire Station Tasmanian Fire Service Cnr Argyle and Melville Streets HOBART TAS 7000  State Emergency Service – Launceston 339 Hobart Rd Youngtown  State Emergency Service – Hobart, 28 Bathurst St. GPO Box 1290  Level 1, 47 Liverpool Street Hobart Tasmania 7000  Royal Hobart Hospital, 48 Liverpool St Hobart TAS 7000  Launceston General Hospital 274-280 Charles St Launceston 7250 <b>Forestry Tasmania</b> Head Office, Hobart 79 Melville Street Hobart, Tasmania - 7000  Robert Hutchings (Emergencies)		  <b>000</b>  (03) 6259 4044  N/A  (03) 6230 8600  (03) 6336 2707 PO Box 1886 Launceston 7250  (03) 6230 2700  03 6222 8308  (03) 6348 7111  1800 367 378  (03) 62881501	Give location as Serpentine Road, Serpentine and Roscarbro Property (Property Identification Number 7333254)  79 Barrack Street Bothwell, tas 7030  Barrack Street Bothwell          <a href="mailto:ses@ses.tas.gov.au">ses@ses.tas.gov.au</a>      : <a href="mailto:ses@ses.tas.gov.au">ses@ses.tas.gov.au</a>      <a href="mailto:forestry.tasmania@forestrytas.com.au">forestry.tasmania@forestrytas.com.au</a>  <a href="mailto:Robin.Hutchings@forestrytas.com.au">Robin.Hutchings@forestrytas.com.au</a>
<b>Drilling Contractors</b> Hunt Energy  Larry Werecky  J R McAlister- Hammond	  Managing Director  Operations manager	(08) 8322 7511  0418 806 281  0429 838 202	<a href="mailto:huntenergy@huntenergy.com.au">huntenergy@huntenergy.com.au</a>  <a href="mailto:larrywerecky@bigpond.com">larrywerecky@bigpond.com</a>  <a href="mailto:jr@huntenergy.com.au">jr@huntenergy.com.au</a>

Gerald Spaulding Drillers	Director Principle	(03) 6424 6900	<a href="http://www.spauldingdrillers.com.au">www.spauldingdrillers.com.au</a>
Keyran Spaulding	Operations Manager	0417 013 619	<a href="mailto:keyran@spauldingdrillers.com.au">keyran@spauldingdrillers.com.au</a>
Simon Spaulding	General Manager	(03) 6424 6900	
<b>Well Services &amp; Equipment</b> Halliburton (Cementing & casing Equip)		(08) 8116 7925	<a href="http://www.halliburton.com">www.halliburton.com</a>
Summer Al Hussaini	Cementing engineer	0434602788	<a href="mailto:sumer.Al-Hussaini@halliburton.com">sumer.Al-Hussaini@halliburton.com</a>
Halliburton SEC (Bits)		(08) 8150 1219	
Roger Ryley	Bit representative	0410 002 373	<a href="mailto:roger.ryley@halliburton.com">roger.ryley@halliburton.com</a>
Transco Tools and Bits		(08) 8326 5599	
Jim Stobie	Managing Director	0407 007 643	<a href="mailto:drillbits@ozemail.com.au">drillbits@ozemail.com.au</a>
Steve White	Pason technician	0439 814 842	<a href="mailto:steve.white@pason.com">steve.white@pason.com</a>
Hofco (Drilling Tools)		(07) 5527 2939	
Kerstine Plimmer	Operations Manager	0412 377 881	<a href="mailto:kerstine@hofco.com.au">kerstine@hofco.com.au</a>
RMN (Mud)		(08) 8338 7288	
Andre Skujins	Manager	0428 833 872	<a href="mailto:abc76048@bigpond.net.au">abc76048@bigpond.net.au</a>
Wood Group (Wellheads)		(08) 8243 4700	
Fraser Melvin	Manager Service	0418 500 806	<a href="mailto:fraser.melvin@woodgroup.com">fraser.melvin@woodgroup.com</a>
Stewart Jury	Manager	0409 179 944	<a href="mailto:stewart.jury@woodgroup.com">stewart.jury@woodgroup.com</a>
MITO (Casing)		(08) 8224 0226	
John Dickson	Area Manager	0411 771 630	<a href="mailto:john.dickson@mitubulars.com.au">john.dickson@mitubulars.com.au</a>
Chris Skewers	Contracts Manager	0412 21 1608	<a href="mailto:christopher.skewers@mitubulars.com.au">christopher.skewers@mitubulars.com.au</a>
Midcon (casing)			
IDS (daily reports)		+62 2743 3432	<a href="http://www.idsdatanet.com">www.idsdatanet.com</a>
Shawn Truesdell	Area Manager	0406 515 387	<a href="mailto:struesdell@idsdatanet.com">struesdell@idsdatanet.com</a>
Alert (blowout control)		+65 6545 5088	<a href="http://www.alertdisastercontrol.com.sg">www.alertdisastercontrol.com.sg</a>
Douglas Wulf	Business Manager	0400 450 065	<a href="mailto:dwulf@alert.com.sg">dwulf@alert.com.sg</a>
Archeological Heritage	Parry	(03) 6278 9598	
Aboriginal Heritage	Kostoglou Rocky Sainty	(03) 6247 3994	<a href="mailto:Rocky.saintly@dpiwe.tas.gov.au">Rocky.saintly@dpiwe.tas.gov.au</a>
<b>Well Evaluation</b> Schlumberger		(03) 9674 7131	<a href="http://www.schlumberger.com">www.schlumberger.com</a>
Rob Twigg	Account Manager	0401 994 284	<a href="mailto:rtwigg@slb.com">rtwigg@slb.com</a>

Weatherford Logging Rex Tench	Manager	(03) 5144 3255	
Geoservices		(08) 8297 5010	<a href="http://www.geoservices.com">www.geoservices.com</a>
Lee Forman	Business Manager	0419 847 734	<a href="mailto:leigh.forman@geoservices.com">leigh.forman@geoservices.com</a>
Cathryn Stevens	Personnel Coordinator	0448 338 114	<a href="mailto:cathryn.stevens@geoservices.com">cathryn.stevens@geoservices.com</a>
DST Australia		(07) 4622 2655	<a href="http://www.ozdst.com">www.ozdst.com</a>
Craig Thorn	General Manager	0427 691 050	<a href="mailto:craigthorn@ozdst.com">craigthorn@ozdst.com</a>
Sue Thorn	Admin Manager	(07) 4622 2655	<a href="mailto:mgr@ozdst.com">mgr@ozdst.com</a>
Farly Riggs		(08) 8240 3222	
Ewan McDonald	Operations Manager	0400 219 709	<a href="mailto:ewan@farlyriggs.com.au">ewan@farlyriggs.com.au</a>
Bill Butler (Viapac)	Acoustics Engineer	(03) 6244 5566	
<b>Logistics/Earthworks</b>			
Gradco (earthworks)		(03) 6339 2535	<a href="http://www.gradco.com.au">www.gradco.com.au</a>
Oliver Diprose	General manager	0418 314 438	<a href="mailto:odiprose@gradco.com.au">odiprose@gradco.com.au</a>
ITAC (Logistical coordinator)		(03) 9335 4444	<a href="http://www.itac.com.au">www.itac.com.au</a>
Paul Edwards	Managing Director	0412 392 692	<a href="mailto:jhiggs@itac.com.au">jhiggs@itac.com.au</a>
Kellara Transport (Local Transport)		(03) 6326 3955	<a href="http://www.kellaratransport.com.au">www.kellaratransport.com.au</a>
Ken Hughes	Managing Director	0409 445 515	<a href="mailto:knekellara@bigpond.com">knekellara@bigpond.com</a>
<b>Regulatory MRT</b>			
Carol Bacon	Managing geologist	(03) 6233 8377	<a href="http://www.mrt.tas.gov.au">www.mrt.tas.gov.au</a>
John Pemberton	Senior Geologist		<a href="mailto:cbacon@mrt.tas.gov.au">cbacon@mrt.tas.gov.au</a>
			<a href="mailto:jpember@mrt.tas.gov.au">jpember@mrt.tas.gov.au</a>

## **APPENDIX 3: Hunt Energy Emergency Response Manual**

## **Appendix 4: Hunt Energy Environmental Incident Procedure**